

CASE PRESENTATION

2014. 11.13

삼성서울병원 호흡기내과 박혜윤

CASE



65/F



Chief Complaints

- Dyspnea (NYHA class III)



Present illness

2003.12 presyncope, DOE 로 본원 내원

Chest CT : massive pulmonary embolism/Lt DVT

→ warfarinization + IVC filter insertion

→ dyspnea NYHA class I

2005.7 dypnea 악화되어 내원



Past medical history

DM/HTN/Hepatitis/Tbc (-/-/-/+):

31 year ago, TB Mx for 6 months

Social history

Smoking : non-smoker

Alcohol : no

Review of system

GW/EF (+/+)

febrile sense/chill (-/-)

weight change (+)

headache/dizziness(-/-)

cough/sputum/**dyspnea** (-/-/+) : NYHA class III

rhinorrhea/sore throat (-/-)

chest pain/palpitation/hemoptysis (-/-/-)

A/N/V/D/C (-/-/-/-/-) abd. pain (-)

melena/hematochezia/hematemesis (-/-/-)

urinary Sx (-)

Physical Examination



V/S: 148/88-96-20-36.0°C

Alert mentality , intact orientation

HEENT :not anemic conjunctiva, anicteric sclera

CHEST : symmetrical breathing

vesicular breath sound without crackle

regular heart beat without murmur

Abdomen : soft and flat, NABS, T/RT(-/-)

Back & Ext. : CVAT (-/-), PTPE (-/-)

Lab Findings (03.12. Dx)

Thrombotic Profile

PT/aPTT 1.02 (INR)/ 37sec

D-dimer : **6.31** ug/dL (< 0.5)

Fibrinogen : **485**mg/dL (182-380)

Protein C (functional) : 105% (70-140%)

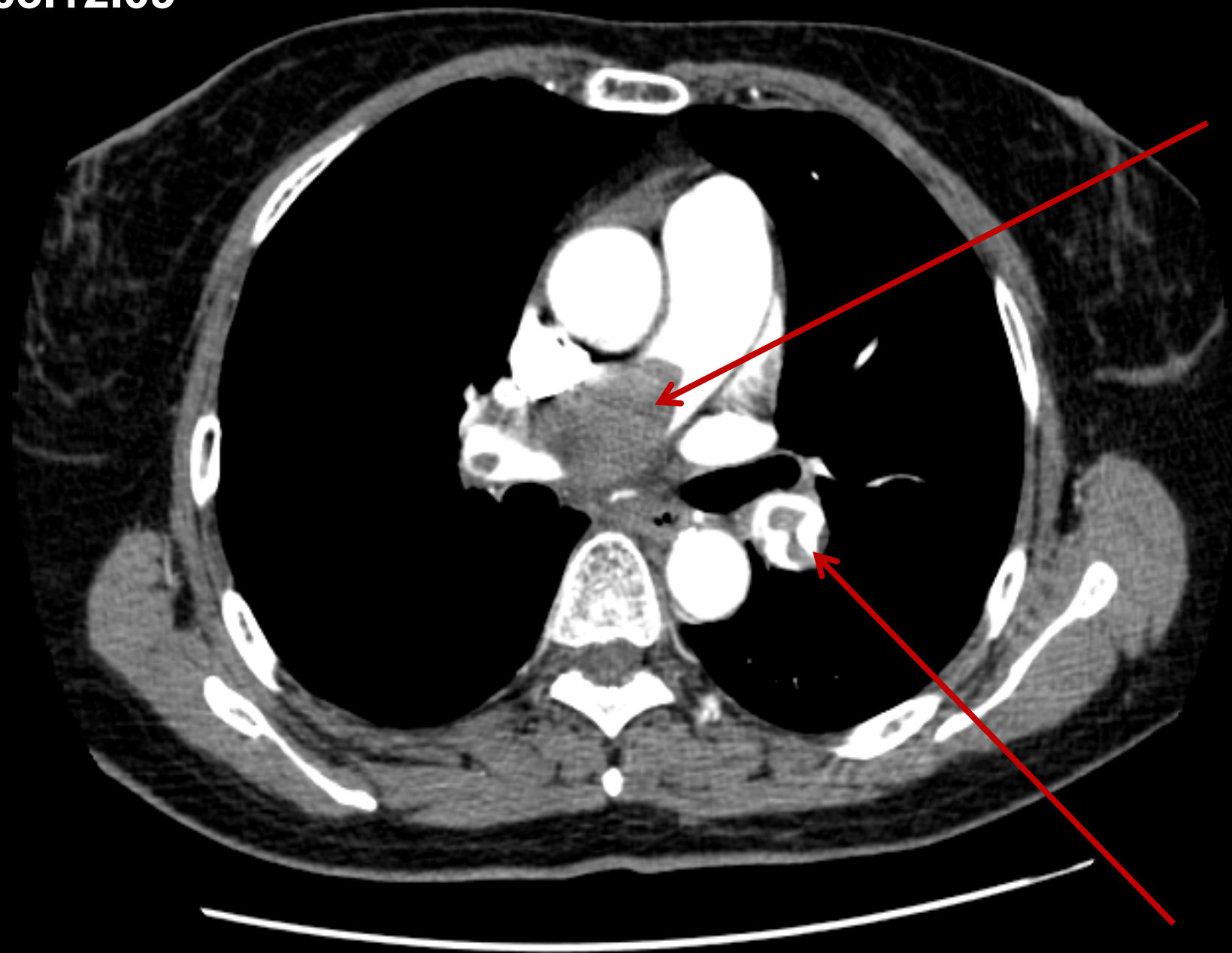
Protein S (total) : 103% (70-140%)

PAI-1 : **120** ng/mL (4-43)

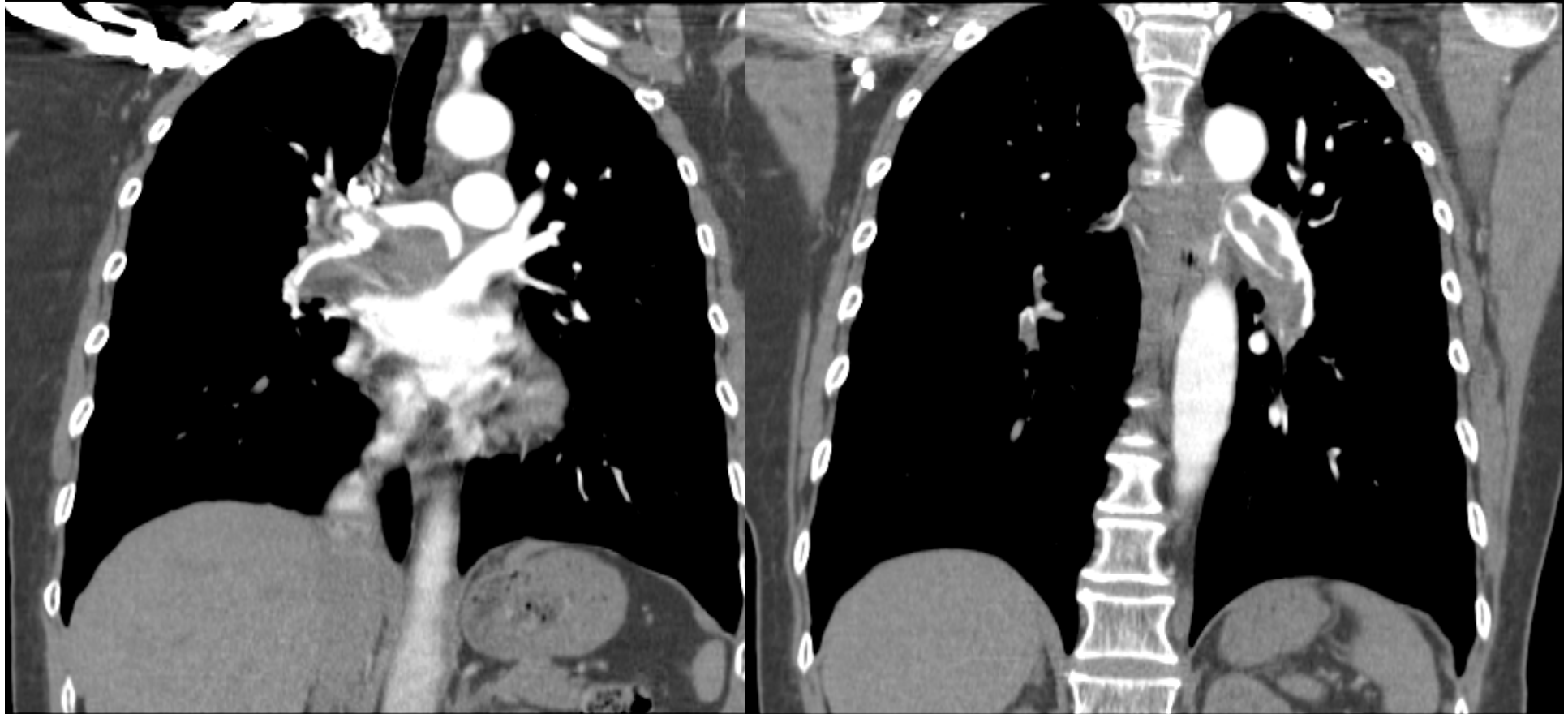
tPA : **15** ng/mL (1-12)

Negative for lupus anticoagulant.

2003.12.09



2003.12.09



Lab Findings and PFT (05.7.)

Lab findings

CBC : 6,090– **15.1**– 186k

PT/aPTT : **3.76 (INR)**/40.2sec

BUN/Cr : 17.0/0.87

Pulmonary Function Test

FVC (L) : 2.52 (92%), FEV₁ (L) : 1.79 (90%)

FEV₁/FVC (%) : 71%

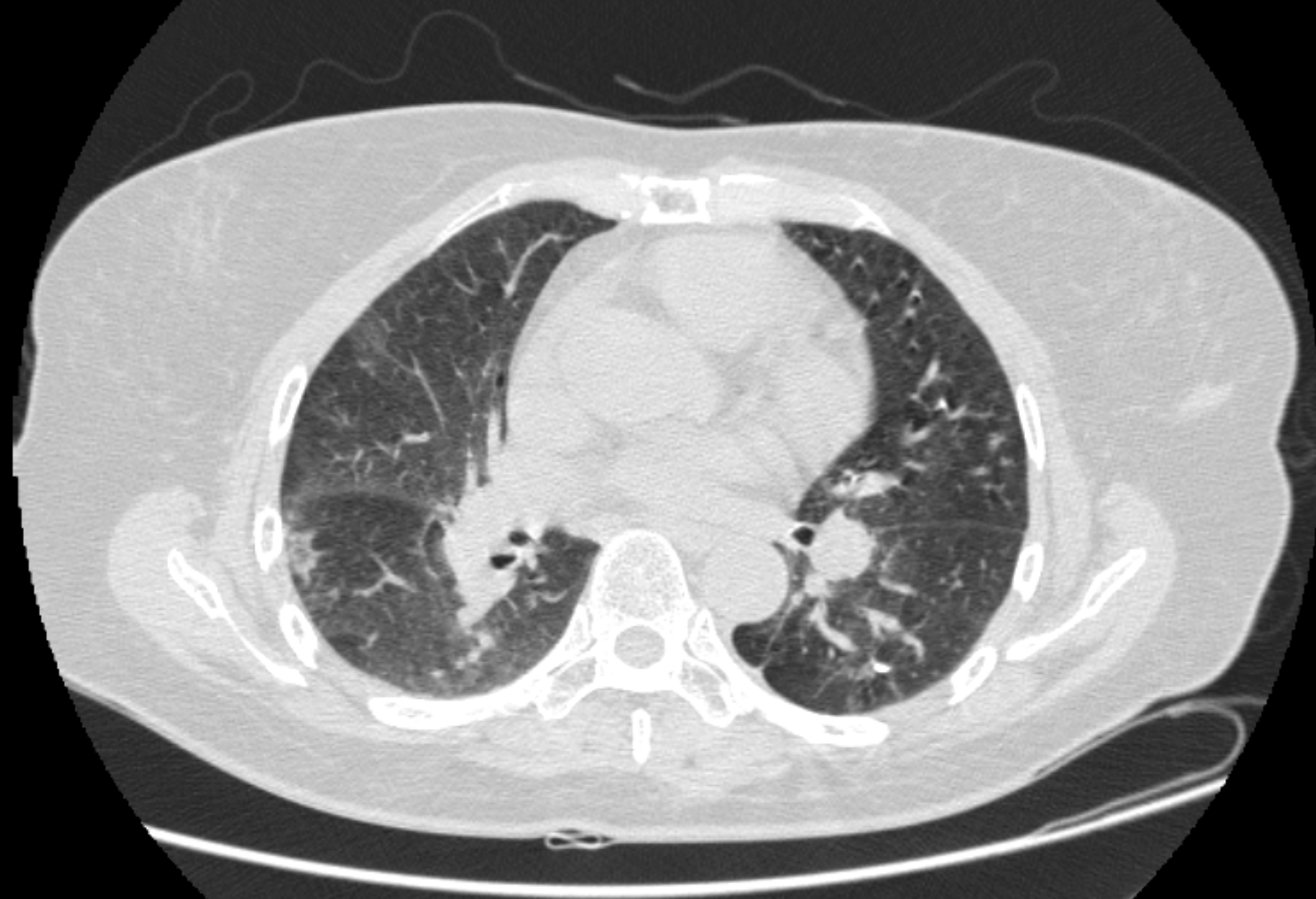
DLco : 14.4 (82%)

TLC (L) : 4.20 (94%)

2005.7.26

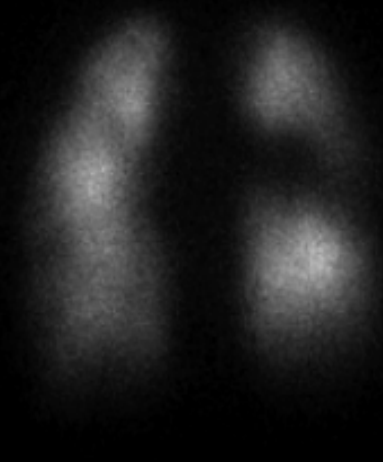


2005.7.26

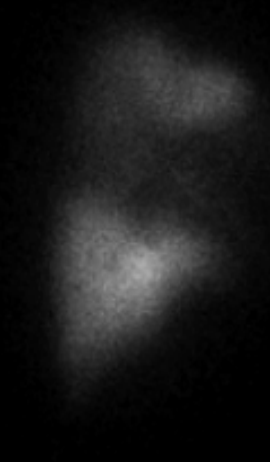




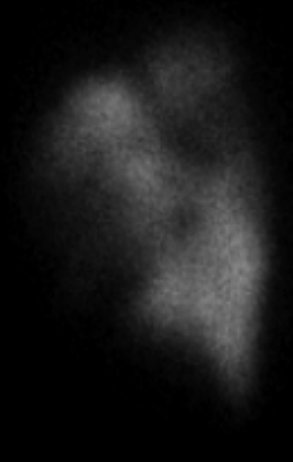
ANT



POST



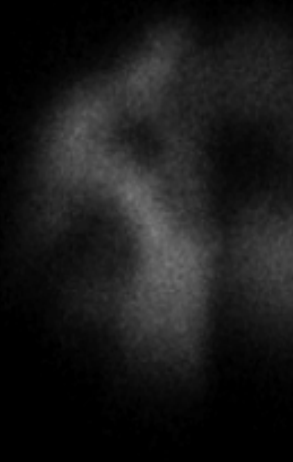
RT LAT



LT LAT



RPO



LPO

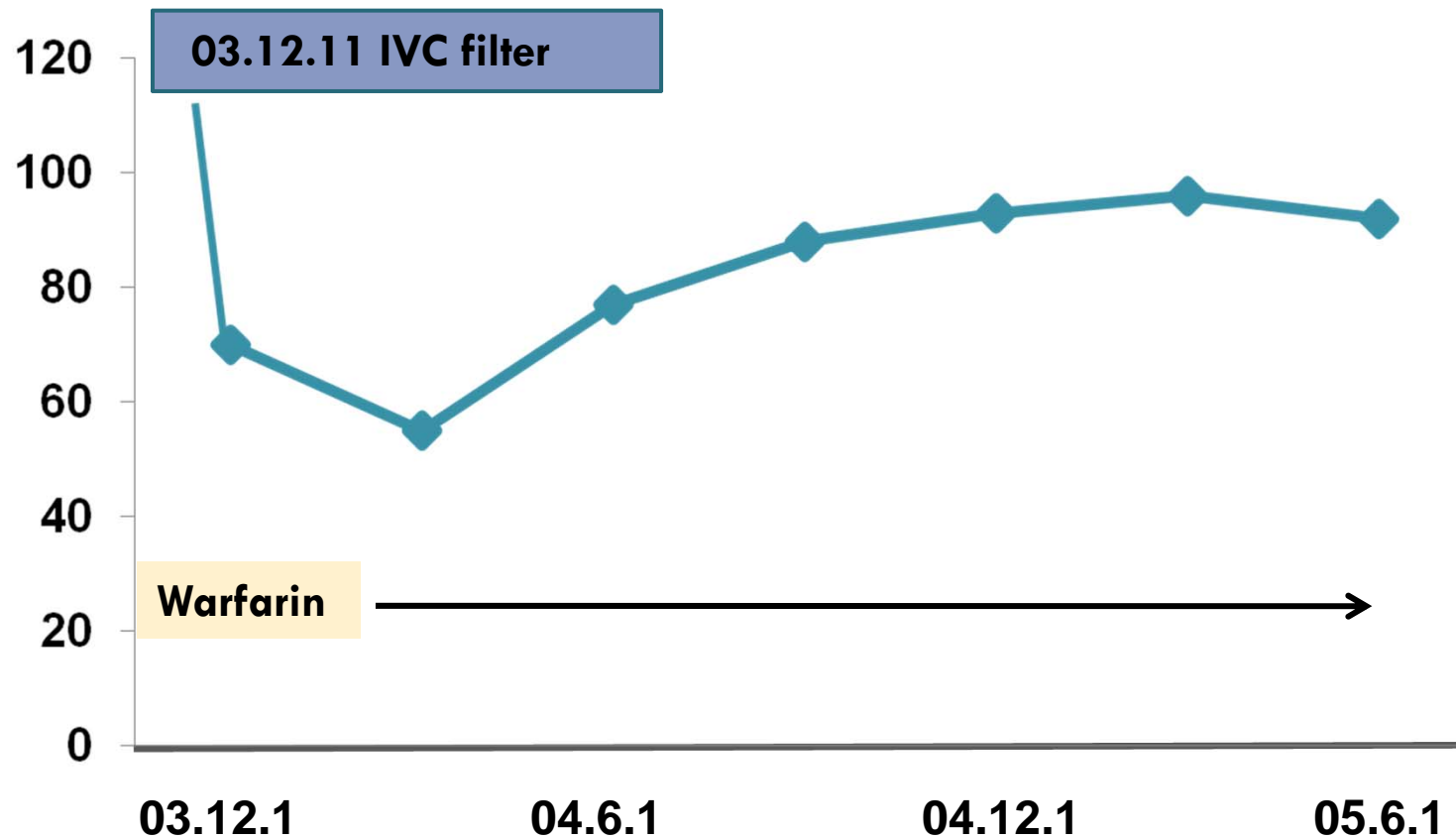
2D-ECHO (05.7.26)



- LVEF 70%
- No regional wall motion abnormality
- Dilated RV cavity size (31mm)
- Mild to moderate TR with RVSP = 92 mmHg
- D-shaped LV at diastole & systole

Changes of RVSP

RVSP (mmHg)



Diagnosis



Chronic thromboembolic pulmonary hypertension (CTEPH)

Treatment



Pulmonary thromboendarterectomy
with tricuspid annular plasty

Post-Op Resected Material



2D-ECHO (05.8.29)



- LVEF 74%
- No regional wall motion abnormality
- Normalized RA & RV & main pulmonary artery size
- minimal TR with RVSP = 31 mmHg

Changes of RVSP

RVSP (mmHg)

